

**LOUISIANA DEPARTMENT OF
AGRICULTURE & FORESTRY**

MIKE STRAIN DVM, COMMISSIONER



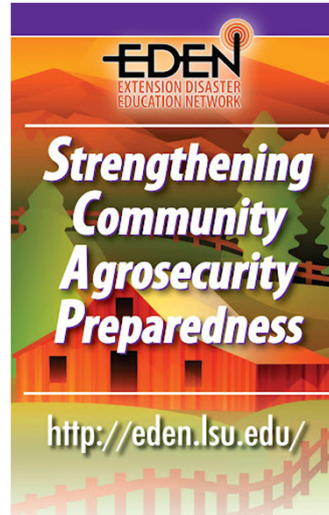
Protecting Food, Agriculture and
Public Safety

ESF-11 All Hazards Plans

- **Natural Disasters**
 - Agriculture Planning, Response, and Assessment
 - Pet Evacuation, Transportation, and Sheltering
 - Emergency Fuel
- **Foreign and Emerging Animal Diseases**
 - Poultry (HPAI/LPAI)
 - Livestock (FAD)
 - NVS Logistics Plan
- **Crop Protection**
 - Exotic Plants and Bioterrorism
 - Damaging Pest and Diseases
- **Food Supply**
- **Man Made Disasters**
- **Continuity of Operations**

Facilitating local planning and response

- LDAF and LSU Ag Center hold regional SCAP training
- Protocol for assessments, communication, and operations
- Local planning and resources first
- Support from State and NGO's

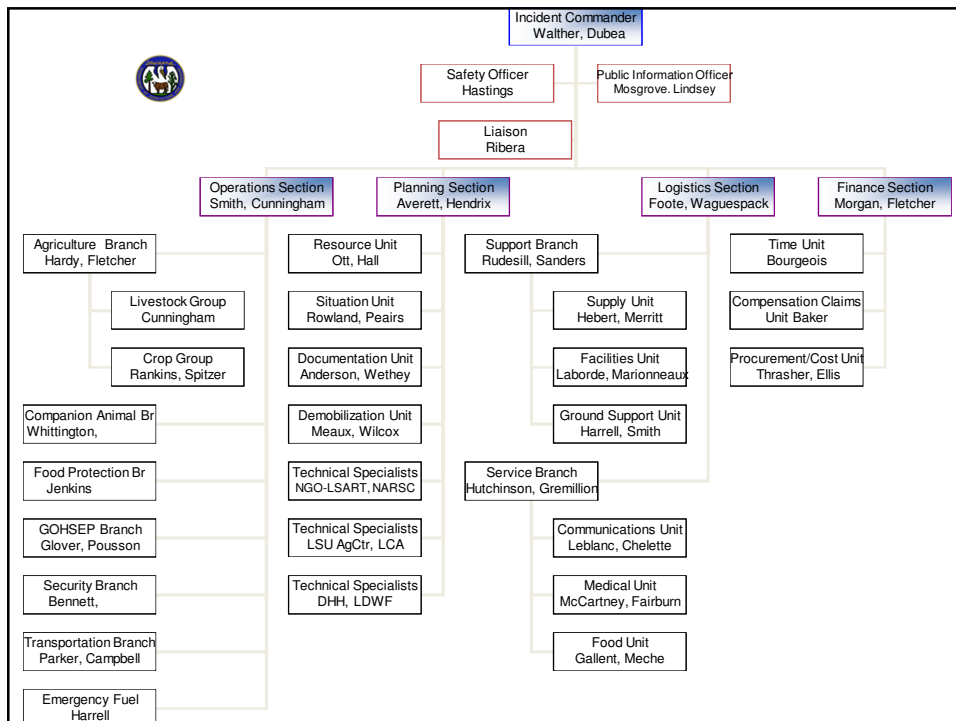


Training

- NIMS ICS Training available to all responders
 - Training available to all responders
 - ICS-100, Introduction to ICS
 - ICS-200, Basic ICS
 - ICS-700, Introduction to the National Incident Management System (NIMS)
 - ICS-800, Introduction to the National Response Framework
 - NIMS ICS for expanding incidents
 - ICS-300, Intermediate ICS
 - ICS-400, Advanced ICS
 - Position Specific Training
 - Command and General Staff Positions

Hurricane Isaac

- Slow moving Cat 1 Hurricane
- Landfall at Port Fourchon 8/29/12
- Huge Storm Surge
- Rainfall up to 18 inches
- Most residents chose not to evacuate
- Flooding 7000 structures in Laplace, 1500 in St Tammany Parishes and 700 in Braithwaite (at least 2 deaths)



Companion Animal Branch Ops

- DOTD contracts for 18 wheel trucks and extended length cargo vans
- Pet transportation study completed with LSU SVM, USDA Animal Care and LSART validating ventilation protocol
- Shelter facilities MOU with LSU Ag Center, ULM Foundation, State Fair of Louisiana and Morehouse Activity Center
- Pet Welfare Groups MOU with LSART, ASPCA, IFAW, AHA, Noah's Wish, and UAN
- Pet search and rescue with LSART, ASPCA and local Animal Controls

Agricultural Branch Ops

- Resource request and operational needs from affected Parishes tasked to ESF-11
- Resource allocation based on aerial and ground assessments by LSU Ag Center and LDAF
- LDAF assets combined with donated hay sustains livestock stranded by flood waters
- Livestock Brand Inspection for owner identification
- Livestock search and rescue LSART and ASPCA
- Continued assessment to advise Parishes

Emergency Fuel Branch Ops

- Handled requests for delivery of 450,000 gallons of fuel forwarded to LDAF through Web EOC
- In addition to the request submitted on Web EOC a responding agency will need to supply additional information to LDAF in order to facilitate fuel delivery
- Reimbursement for fuel will be sought by receiving agency

Contact Information

LDAF Emergency Programs

John Walther, Director

225-935-2150

john_w@ldaf.state.la.us